

Chintz Medallion



Finished quilt size: 79" x 79"



Finished topper size: 37" x 37"

Chintz Medallion



22175 E



22183 A



22184 A



22179 A



22182 A



22178 A



22181 A



22177 A



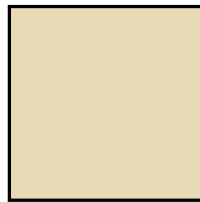
22176 A



22180 A



22176 Q



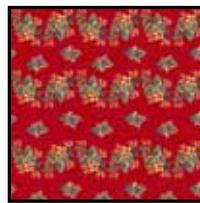
22191 E



22185 R



22186 R



22187 R



22188 R



22189 R



22190 R

Quilt	
FABRIC REQUIREMENTS	
Design	Yards
22175 E 1 motif	1 PANEL
22183 A (inc binding)	1¼
22184 A	1⅝
22179 A	⅓
22182 A	⅓
22178 A	⅓
22181 A	⅓
22177 A	⅓
22176 A	⅓
22180 A	⅓
22176 Q	3⅝
22191 E	2
22185 R	¼
22186 R	¼
22187 R	¼
22188 R	¼
22189 R	¼
22190 R	½
22183 A backing	7½

Table Topper	
FABRIC REQUIREMENTS	
Design	Yards
22175 E (1 motif)	1 PANEL or remainder from quilt
22183 A	⅔
22186 R (inc binding)	¾
22180 A (backing)	1⅓

Chintz Medallion

Finished quilt size: 79" x 79"

Skill level: Advanced

Cutting Directions: **WOF= width of fabric**

22175-E Chintz medallion panel

- Fussy cut (1) 21 ½" x 21 ½" square with 1 medallion motif centered in the square.

22183-A Tan spaced floral

- Cut (1) 19" x WOF strip; recut into (2) 19" squares.
- Cut each square in half diagonally to make 4 A triangles.
- Cut (9) 2 ¼" x WOF strips for binding.

22191-E Cream solid

- Cut (2) 3 ⅛" x WOF strips; recut into (20) 3 ⅛" squares. Cut the squares in half diagonally to make 40 B triangles.
- Cut (8) 3 ¼" x WOF strips; recut into (90) 3 ¼" E squares.
- Cut (4) 5 ¾" x WOF strips; recut into (26) 5 ¾" squares and (2) 5 ⅜" squares. Cut the 5 ¾" squares twice diagonally to make 104 I triangles and cut the 5 ⅜" squares in half diagonally to make 4 M triangles.

22190-R Red stripe

- Cut (4) 3 ¼" x WOF strips; recut into (40) 3 ¼" C squares.

22185-R Red prints 1

22186-R Red prints 2

22187-R Red prints 3

22188-R Red prints 4

22189-R Red prints 5

- Cut (1) 3 ¼" x WOF strip from each fabric; recut into (10) 3 ¼" D squares of each fabric.

22176-Q Light green floral

- See Special Cutting.

22176-A Tan print 1

22177-A Tan print 2

22178-A Tan print 3

22179-A Tan print 4

22180-A Tan print 5

22181-A Tan print 6

22182-A Tan print 7

- Cut (1) 6 ⅞" x 42" strip from each fabric; recut into (4) 6 ⅞" L squares of each fabric.

22184-A Tan floral swag print

- See Special Cutting.

22183-A Backing

- Cut (3) 87" pieces.

Special Cutting:

Refer to **Diagram 1** for steps 3 - 5.

1. Prepare the following clear plastic templates: 5" x 11 ¼" G rectangle, 5" x 11 ¾" F rectangle, 3 ⅝" H square, 5 ¾" J square, and 5 ⅜" K square.
2. Iron the light green floral to remove all wrinkles and creases.
3. Place the G template on 1 floral cluster. Mark around the template. Repeat to mark 12 G rectangles.
4. Repeat with the F template to mark 8 F rectangles.
5. Mark 40 H squares, 6 J squares, and 2 K squares in the fabric around the F and G rectangles.

Note: The squares may be placed closer together than shown on the diagram to cut as many as possible from each area of leftover fabric.

Diagram 1



6. Carefully cut out the pieces. Cut the J squares twice diagonally to make 24 J triangles. Cut the K squares in half diagonally to make 4 K triangles.
7. Iron the tan floral swag print.
8. Cut (4) 4" x WOF strips from selvedge to selvedge with **identical longer swag sections** centered in each strip for outer borders. See **Diagram 2** below for steps 8 and 9.
9. Cut (4) 4" x WOF strips from selvedge to selvedge with **identical shorter swag sections** centered in each strip for outer borders.

Diagram 2



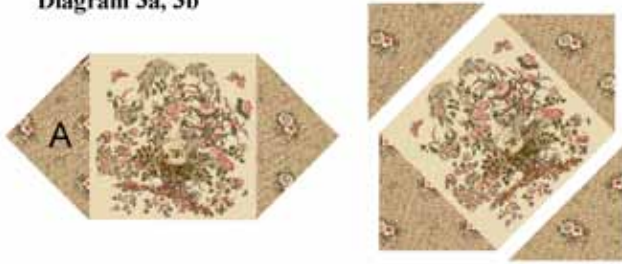
NOTE: This quilt depends on very accurate piecing. Be sure that seam allowances are a scant $\frac{1}{4}$ ".

Make a test four patch block using $2\frac{1}{2}$ " squares. After assembly the test block should measure $4\frac{1}{2}$ " unfinished.

Quilt Center:

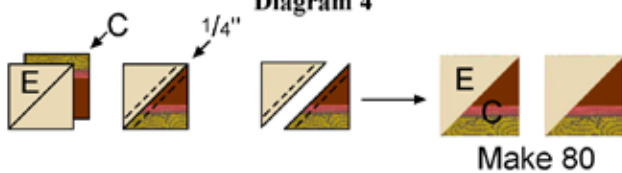
1. Fold the Chintz Medallion square in quarters and crease to mark the center of each edge. Fold each tan A triangle in half to mark the center of the long edges.
2. Sew an A triangle to opposite sides of the Chintz Medallion square, matching the center creases. Press seams toward the triangles. Trim the ends of the triangles even with the edges of the square. Sew A triangles to the remaining sides of the square. Press seams toward the triangles. **Diagram 3a and 3b.**

Diagram 3a, 3b



3. Trim the square to $32\frac{3}{8}$ " x $32\frac{3}{8}$ " with the medallion centered. *Note: There will be approximately $1\frac{1}{4}$ " beyond the corners of the chintz medallion square.*
4. Draw a diagonal line on the wrong side of each cream E square.
5. Place a marked square right sides together with a red stripe C square. Stitch $\frac{1}{4}$ " on each side of the marked line. Cut on the marked line. Press each unit open with the seam to the red side to complete 2 CE units. Repeat to make 80 CE units total. Trim each unit to measure $2\frac{3}{4}$ " x $2\frac{3}{4}$ ". **Diagram 4.**

Diagram 4



6. Repeat step 5 with the remaining marked E squares and the red print D squares to make (100) $2\frac{3}{4}$ " DE units. **Diagram 5.**

Diagram 5



7. Arrange 20 red stripe CE units, 25 red print DE units, and 10 cream B triangles in 9 rows, alternating CE and DE units in each row. Join the units in rows. Press seams to the red sides. Join the rows to complete 1 pieced corner triangle. Press seams to 1 side. Repeat to make 4 pieced corner triangles total. **Diagram 6.**

Diagram 6



8. Sew a pieced corner triangle to opposite sides of the center medallion. Press seams toward the center medallion. Sew a pieced corner triangle to the remaining sides to complete the $45\frac{1}{2}$ " x $45\frac{1}{2}$ " quilt center. Press seams toward the center medallion. **Diagram 7a and 7b.**

Diagram 7a, 7b



Quilt Assembly:

Note: Refer to the quilt drawing throughout the following steps.

1. Join 3 light green floral G rectangles and add an F rectangle to each end. Press seams to 1 side. Trim the ends of the strip at a 45° angle. Repeat to make 4 border strips total. **Diagram 8a and 8b.**

Diagram 8a, 8b

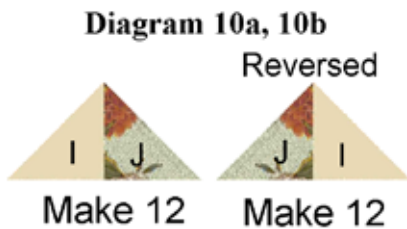


2. Center and sew a border strip to each side of the quilt center, beginning and ending stitching $\frac{1}{4}$ " from each corner of the quilt center. Stitch the angled corner seams. Press the corner seams open and the border seams toward the border strips.

3. Sew a cream I triangle to adjacent sides of each light green floral H square to make 40 HI units. Press seams toward the cream triangles. **Diagram 9.**



4. Stitch a cream I triangle to a light green floral J triangle. Press seam toward the light green triangle. Repeat to make 12 IJ units and 12 reversed IJ units. **Diagram 10a and 10b.**



5. Sew an HI unit to opposite sides of 16 assorted tan print L squares to make 16 border units. Press seams toward the L squares. **Diagram 11a and 11b.**



6. Stitch an HI unit to 1 side of 8 assorted tan print L squares. Press seams toward the L squares. Add an IJ unit to the opposite side of the L squares and a reversed IJ unit to an adjacent side of the L squares to make 8 end units. Press seams toward the L squares. **Diagram 12.**

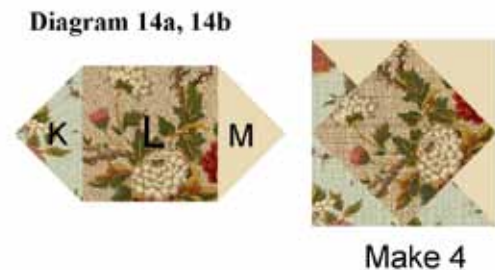


7. Join 4 border units to make a strip. Press seams in 1 direction. Add an end unit to each end to complete 1 border strip. Press seams toward the end units. Repeat to make 4 border strips. **Diagram 13a and 13b.**



8. Sew a border strip to opposite sides of the quilt center. Press seams toward the quilt center.

9. Sew a cream M triangle and a light green floral K triangle to opposite sides of the remaining tan print L squares. Press seams toward the L squares. Sew an IJ unit and a reversed IJ unit to the remaining sides of the L squares to complete 4 corner units. Press seams toward the L squares. **Diagram 14a and 14b.**



10. Sew a corner unit to each end of the remaining pieced border strips. Press seams toward the corner units. Sew the pieced strips to the remaining sides of the quilt center. Press seams toward the quilt center.

11. Join 2 identical tan shorter swag 4" x WOF strips on the short ends to make a long strip. Trim to 72 $\frac{1}{2}$ ". Repeat with the 2 remaining shorter swag strips. Sew the strips to opposite sides of the quilt center. Press seams toward the strips.

12. Join 2 identical tan longer swag 4" x WOF strips on the short ends to make a long strip. Trim to 79 $\frac{1}{2}$ ". Repeat with the 2 remaining longer swag strips. Sew the strips to the remaining sides of the quilt center to complete the quilt top. Press seams toward the strips.

13. Remove the selvage edges from the backing pieces. Join the pieces on the long edges with a $\frac{1}{2}$ " seam allowance. Press seams open. Trim the side edges to make an 87" x 87" backing piece.

14. Layer, quilt and bind, using your favorite methods and the tan spaced floral binding strips, to complete the quilt.

Chintz Table Topper

Finished topper size: 37" x 37"

Skill level: Beginner

Cutting Directions: WOF= width of fabric

22175-E Chintz medallion panel

- Fussy cut (1) 21 ½" x 21 ½" square with 1 medallion motif centered in the square.

22183-A Tan spaced floral

- Cut (1) 19" x WOF strip; recut into (2) 19" squares.
- Cut each square in half diagonally to make 4 A triangles.

22186-R Red floral

- Cut (4) 3" x WOF strips; recut into (2) 3" x 32 ½" strips and (2) 3" x 37 ½" strips.
- Cut (4) 2 ¼" x WOF strips for binding.

22180-A Tan print (backing)

- Cut (1) 42"–43" square.

Topper Assembly:

1. Fold the chintz medallion square in quarters and crease to mark the center of each edge. Fold each tan A triangle in half to mark the center of the long edges.
2. Sew an A triangle to opposite sides of the chintz medallion square, matching the center creases. Press seams toward the triangles. Trim the ends of the triangles even with the edges of the square. Sew an A triangle to the remaining sides of the square. Press seams toward the triangles.

3. Trim the square to 32 ½" x 32 ½" with the medallion centered.

Note: There will be approximately 1 ¼" beyond the corners of the chintz medallion square.

4. Stitch a 3" x 32 ½" red floral strip to opposite sides of the medallion center. Press seams toward the strips. Sew the 3" x 37 ½" red floral strips to the remaining sides to complete the top.

5. Layer, quilt, and bind, using your favorite methods and the red floral binding strips, to complete the topper.



While all possible care has been taken to ensure the accuracy of this pattern, we are not responsible for printing errors or the way in which individual work varies.