

# “CRANE PARADISE”

Quilt Design by Denise M. Russart Featuring fabrics in the  
“Hanako’s Treasures Collection” from Hoffman California Fabrics



H8759 Cream Gold #33G



H8758 Teal Gold #21G



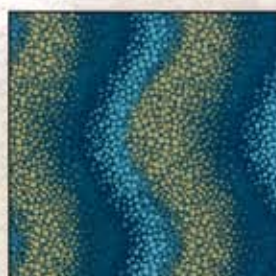
H8756 Teal Gold #21G



H8759 Opal Gold #132G



H8757 Teal Gold #21G



H8760 Teal Gold #21G

To see more quilts designed by Denise go to [www.justquiltin.wordpress.com](http://www.justquiltin.wordpress.com)

Free pattern available from [www.HoffmanFabrics.com](http://www.HoffmanFabrics.com)

Quilt Size 62" x 72"

| Style  | 1 Kit     | 12 Kits    |
|--|-----------|------------|
| H8759 Cream Gold #33G                              | 2 ¾ yards | 33 yards   |
| H8758 Teal Gold #21G                               | 1 ¾ yards | 16 ½ yards |
| H8756 Teal Gold #21G                               | ¾ yards   | 9 yards    |
| H8759 Opal Gold #132G                              | 1 yard    | 12 yards   |
| H8757 Teal Gold #21G                               | ¾ yards   | 4 ½ yards  |
| H8760 Teal Gold #21G                               | 1 ¾ yards | 13 ½ yards |
| Backing (Your favorite "Hanako's Treasure" Fabric) | 4 ½ yards | 54 yards   |

**HOFFMAN FABRICS**

CALIFORNIA-INTERNATIONAL



# “CRANE PARADISE”

Quilt Design by Denise M. Russart Featuring fabrics in the  
“Hanako’s Treasures Collection” from Hoffman California Fabrics



H8759 Cream Gold #33G



H8758 Wine Gold #50G



H8756 Wine Gold #50G



H8759 Wine Gold #50G



H8757 Wine Gold #50G



H8760 Wine Gold #50G

To see more quilts designed by Denise go to [www.justquiltin.wordpress.com](http://www.justquiltin.wordpress.com)

Free pattern available from [www.HoffmanFabrics.com](http://www.HoffmanFabrics.com)

Quilt Size 62" x 72"

| Style  | 1 Kit                 | 12 Kits                |
|--|-----------------------|------------------------|
| H8759 Cream Gold #33G                              | 2 $\frac{3}{8}$ yards | 33 yards               |
| H8758 Wine Gold #50G                               | 1 $\frac{3}{8}$ yards | 16 $\frac{1}{2}$ yards |
| H8756 Wine Gold #50G                               | $\frac{3}{4}$ yards   | 9 yards                |
| H8759 Wine Gold #50G                               | 1 yard                | 12 yards               |
| H8757 Wine Gold #50G                               | $\frac{3}{8}$ yards   | 4 $\frac{1}{2}$ yards  |
| H8760 Wine Gold #50G                               | 1 $\frac{1}{8}$ yards | 13 $\frac{1}{2}$ yards |
| Backing (Your favorite "Hanako's Treasure" Fabric) | 4 $\frac{1}{2}$ yards | 54 yards               |

**HOFFMAN FABRICS**

CALIFORNIA-INTERNATIONAL



# Hanako's Treasures

## Fabric Collection by Hoffman Fabrics

'Crane's Paradise' by Denise M. Russart - a Justquiltin Design  
 Quilt Size: 62" x 72"

|           | Wine Gold Quilt               | Teal Gold Quilt      | Yardage |
|-----------|-------------------------------|----------------------|---------|
| Fabric A  | H8759-33G Cream               | H8759-33G Cream      | 2+3/4   |
| Fabric B  | H8758-50G Wine Gold           | H8758-21G Teal Gold  | 1+3/8   |
| Fabric C  | H8756-50G Wine Gold           | H8756-21G Teal Gold  | 3/4     |
| Fabric D  | H8759-50G Wine Gold           | H8759-132G Teal Gold | 1.0     |
| Fabric E  | H8757-50G Wine Gold           | H8757-21G Teal Gold  | 3/8     |
| Fabric F* | H8760-50G Wine Gold           | H8760-21G Teal Gold  | 1+1/8   |
| Backing   | Any Hanako's Treasures fabric |                      | 4+1/2   |

wof = width of fabric      sc = subcut pieces from strip just cut      \*includes binding yardage  
 Label all pieces with the letter/number combination in parentheses to aid in piecing

### CUTTING INSTRUCTIONS

#### Fabric A

- [1] 15.5" x wof strip
  - sc [12] 2.0" x 15.5" [A2]
  - From remaining fabric in strip, cut [4] 2" x 15.5"
    - sc [23] 2.0" squares [A8]
- [1] 12.5" x wof strip
  - sc [9] 2.5" x 12.5" [A3]
  - sc [6] 2.0" x 10.5" [A4]
  - sc [4] 2.0" x 2.5" [A9]
- [1] 12.5" x wof strip
  - sc [10] 2.0" x 12.5" [A5]
  - sc [7] 2.5" x 7.5" [A6]
- [1] 2.0" x wof strip
  - sc [4] 2.0" x 7.5" [A7]
- [2] 5.5" x wof strip
  - sc [46] 1.25" x 5.5" [A10]
- [2] 4.0" x wof strips
  - sc [46] 1.25" x 4.0" [A11]
- [1] 6.5" x wof strip
  - sc [8] 1.5" x 6.5" [A12]
  - sc [8] 1.5" x 4.5" [A13]
- [14] 1.5" x wof strips [A14]

#### Fabric B

- [1] 7.5" x wof strip and sc [2] 7.5" squares [B1]
- [8] 4.5" x wof strips [B2]

#### Fabric C

Fussy cut [4] 12.5" squares centering the portion of this fabric you want to appear in the four largest blocks. [C1]

#### Fabric D

- [1] 15.5" x wof strip
  - sc [18] 2" x 15.5" [D1]
  - sc [2] 2.5" x 12.5" [D2]
- [2] 2.5" x wof strips, sc [32] 2.0" x 2.5" [D3]
- [1] 10.5" x wof strip, sc [14] 2.0" x 10.5" [D4]

#### Fabric E

- [1] 12.5" x wof strip
  - sc [1] 7.5" x 12.5" [E1]
  - sc [4] 4.5" squares [E2]

#### Fabric F

- [2] 4.0" x wof strips
  - sc [46] 1.5" x 4.0" [F1]
- [2] 2.0" x wof strips
  - sc [46] 1.5" x 2.0" [F2]
- [9] 2.5" x wof strips [Binding]

\*all seams pressed away from center unless otherwise indicated.



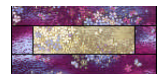
Sew A5 to left and right side of C1. Sew A2 to top and bottom. Make 4.

Sew F2 to left and right of A8. Add F1 to top and bottom. Sew A11 to left and right. Add A10 to top and bottom. Make 23.



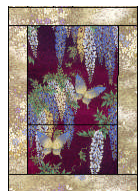
Sew D3 to short ends of A3. Add D1 to opposite sides. Make 9.

Sew D3 to short ends of A6. Add D4 to opposite sides. Make 7.



Sew A9 to short ends of D2. Add A2 to opposite sides. Make 2.

Sew A7 to left and right of B1. Add A4 to top and bottom. Make 2.



Sew A5 to left and right of E1. Add A4 to top and bottom. Make 1.

Sew A13 to left and right of E2. Add A12 to top and bottom. Make 4. (Border corners)



Sew (6) A14 short edges together with a 45 degree diagonal seam to make one long strip. Cut into (4) pieces 50.5" long.

Sew (2) B2 strips on the 45 degree diagonal to join into one long border strip. Repeat to make second border strip and trim both border strips 50.5" long.

Stitch the 1.5" Fabric A border strips previously made to long sides of Fabric B strips.



Sew remaining (8) A14 pieces into pairs along the short edges joining with a 45 degree diagonal seam. Trim all to 60.5" long.

Sew remaining (4) B2 strips into pairs on the 45 degree diagonal. Trim both to 60.5" long.

Stitch A14 borders to either side of each B2 border.



## QUILT ASSEMBLY

Starting in upper left of quilt, assemble blocks into larger sections and then join larger sections together as indicated by the arrows.

The left two thirds of the quilt are assembled into one piece, the right one third another and then those two long sections are joined into the finished top.



Once quilt top is completed, add 60.5" border sections to left and right.



Stitch four corner border blocks to each edge of remaining border sections. And join to top and bottom of quilt.

Stitch binding strips together with a 45 degree seamline to make double fold binding.

Backing fabric is cut into two pieces, each 2-1/4 yards along and joined on long edge for vertical seam running length of quilt.

Layer, quilt, bind and enjoy!