

# Tidbits on the Vine

By Kari Ramsag of Fresh Cut Quilts



www.freshcutquilts.com  
www.freshcutquilts.blogspot.com



 **Henry Glass & Co.**

66" x 78"

49 West 37th Street  
New York, NY 10018  
tel: 212-686-5194 fax: 212-532-3525  
New York: 800-294-9495  
www.henryglassfabrics.com



# Tidbits on the Vine

Designed by Kari Ramsay  
Fresh Cut Quilts Pattern Design  
66" x 78"

## Notes:

*Please read through all the instructions before beginning. Seams are 1/4".*

*WOF = width of fabric. Applique shapes do not include a seam allowance.*

*Recommended tools:*

*3/4" Clover Bias tape Maker*

*Bias Square Ruler*

## Fabric Requirements

### For Blocks

1/6 yd each:

- 7322-44 Cream Bracelet Dot
- 7320-38 Chestnut Damask
- 7326-22 Petal Stripe
- 7326-11 Glacier Stripe
- 7326-43 Buttercup Leaf
- 7324-22 Petal Leaf
- 7320-22 Petal Damask

### For Blocks and flower petals & leaves

1/2 yd each:

- 7321-43 Buttercup Paisley
- 7321-22 Petal Paisley
- 7321-11 Glacier Paisley
- 7325-22 Petal Teardrop
- 7324-66 Moss Leaf

### For Flower Centers

1/4 yd 7323-22 Petal Foulard

### For Flower vine

3/8 yd 7323-66 Moss Foulard

### For Background, stop border, pieced border

2 yds 7323-38 Chestnut Foulard

### For Pieced Inner border & Outer Border

2 1/3 yds 7320-44 Cream Damask

### Binding

5/8 yd 7322-38 Chestnut Bracelet Dot

### Back

5 yards 7326-11 Petal Stripe

## Cutting Requirements

From each fabric listed, cut:

**5 1/4" x 9" rectangles**

- (3) Cream Bracelet Dot
- (3) Buttercup Leaf
- (3) Chestnut Damask
- (3) Petal Damask
- (3) Buttercup Paisley
- (3) Petal Leaf
- (3) Petal Stripe
- (3) Glacier Stripe
- (3) Glacier Teardrop
- (3) Petal Teardrop
- (3) Glacier Paisley
- (2) Moss Leaf
- (1) Petal Paisley

### Chestnut Foulard 7323-38

- (3) 8" x WOF strips, pieced into:
  - (2) 8" x 57 1/2" strips for vertical background
- (6) 2" x WOF strips cut into:
  - (36) 2" x 5 1/4" rectangles for blocks
- (6) 2" x WOF strips, pieced into:
  - (2) 2" x 48 1/2" strips for inner border
  - (2) 2" x 57 1/2" strips for stop border
- (4) 4" x WOF strips, cut into (36) 4" squares, Cut once on diagonal, a total of 72 triangles for pieced border

### Cream Damask 7320-44

- (7) 6 1/2" x WOF strips, pieced into:
  - (4) 6 1/2" x 66 1/2" strips for outer border
- (4) 4" x WOF strips, cut into (36) 4" squares, Cut once on diagonal, a total of 72 triangles for pieced border
- (4) 3 1/2" squares for corners of pieced border

### Chestnut Bracelet Dot 7322-38

- (8) 2 1/2" x WOF strips pieced end to end for binding

©2010 Henry Glass Fabrics

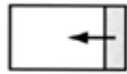
## Block Construction

**Blocks** 4 3/4" x 10" finished size.

The blocks are easy! Stitch a 2" x 5 1/4" chestnut foulard rectangle to one end of a 5 1/4" x 9" print rectangle. The Damask prints are directional. If you want them all to go one way, piece as directed below. Press toward the large rectangle.

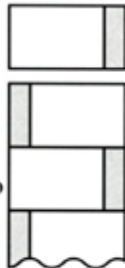
Make a total of 36 blocks using:

- (3) Cream Bracelet Dot
- (3) Buttercup Leaf
- (3) Chestnut Damask (2 on the left, one on the right)
- (3) Petal Damask (2 on the right, one on the left)
- (3) Buttercup Paisley
- (3) Petal Leaf
- (3) Petal Stripe
- (3) Glacier Stripe
- (3) Glacier Teardrop
- (3) Petal Teardrop
- (3) Glacier Paisley
- (2) Moss Leaf
- (1) Petal Paisley



Use the quilt picture as a guide to arrange the blocks. Sew the blocks into three columns of (12) blocks each.

Alternate the three pieced columns with two 8" x 57 1/2" vertical strips Chestnut Foulard background and sew together.



## Bias Stems

Using the method of your choice, make approximately 145" of 3/4" bias stems from Moss Foulard.

I recommend the 3/4" Clover Bias Tape Maker.

## Applique Flowers & Leaves

Using the method of your choice, prepare (30) petals, (10) centers and (15) leaves.

I like to use invisible machine applique. If you choose this method, you will need to add a seam allowance to the applique shapes. Cut 30

### Flowers:

Cut (6) petals from each:

- Pink Paisley
- Pink Teardrop
- Glacier Teardrop
- Yellow Paisley
- Blue Paisley

**Flower centers** - cut (10) Petal Foulard

**Leaves** - cut (15) Moss Leaf

Arrange bias stems and flowers on the quilt top, using the quilt picture as a guide. Extend the bias stems to the edge of the quilt top so they will be included in the seam allowance with the inner border. Applique in place.

## Borders

Note: Press toward the borders.

### Inner Stop border

Sew 2" x 57 1/2" strips chestnut foulard to each side of the quilt top.

Sew 2" x 48 1/2" strips chestnut foulard to the top and bottom of the quilt top.

### Pieced Border

Pair (36) 4" chestnut foulard triangles with (36) 4" cream damask triangles. Sew with right sides together. Press toward the chestnut foulard. Square the blocks to 3 1/2", using a bias square ruler, if available.



Make 72 blocks, measuring 3 1/2"

Sew blocks together as shown into (2) rows of (20) blocks. Sew these to each side of the quilt top.



Sew remaining half square triangle blocks into two rows of (16) blocks. Add a 3 1/2" cream damask square to each end of these rows. Press toward the borders. Sew these borders to the top and bottom of the quilt top.

### Outer border

Sew 6 1/2" x 66 1/2" strips to each side of the quilt top and the remaining 6 1/2" x 66 1/2" strips to the top and bottom.

Layer, quilt & bind with 2 1/2" chestnut bracelet dot strips.

Cut 10

www.henryglassfabrics.com

# Tidbits

By Kari Ramsay of Fresh Cut Quilts



Petal Damask  
7320-22



Chestnut Damask  
7320-38



Cream Damask  
7320-44



Glacier Paisley  
7321-11



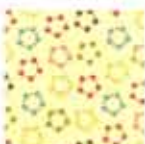
Petal Paisley  
7321-22



Buttercup Paisley  
7321-43



Chestnut Bracelet Dot  
7322-38



Cream Bracelet Dot  
7322-44



Petal Foulard  
7323-22



Chestnut Foulard  
7323-38



Moss Foulard  
7323-66



Petal Leaf  
7324-22



Buttercup Leaf  
7324-43



Moss Leaf  
7324-66



Glacier Tear Drop  
7325-11



Petal Tear Drop  
7325-22



Petal Stripe  
7326-22



Glacier Stripe  
7326-11



[www.freshcutquilts.com](http://www.freshcutquilts.com)  
[www.freshcutquilts.blogspot.com](http://www.freshcutquilts.blogspot.com)



Henry Glass & Co.

49 West 37th Street  
New York, NY 10018  
tel: 212-686-5194 fax: 212-532-3525  
New York: 800-294-9495  
[www.henryglassfabrics.com](http://www.henryglassfabrics.com)