



TWO by TWO



By Leanne Anderson - The Whole Country Caboodle



48 1/2" x 69"

65 1/2" x 85"

 **Henry Glass & Co., Inc.**

49 West 37th Street
New York, NY 10018
tel: 212-686-5194 fax: 212-532-3525
New York: 800-294-9495
www.henryglassfabrics.com



To view the entire collection and download a free pattern, please visit our website at www.henryglassfabrics.com



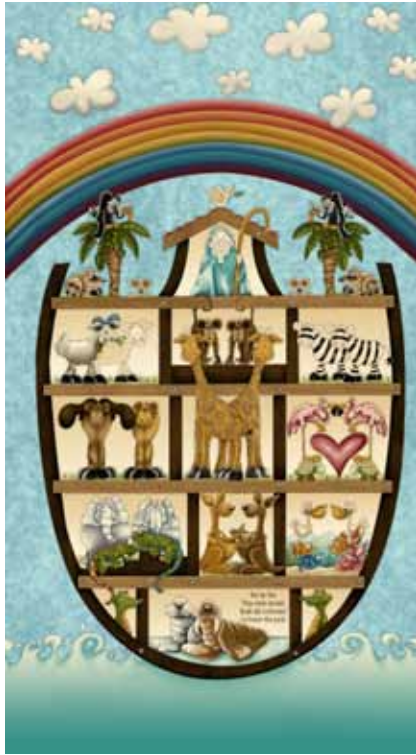
From Leanne Anderson of the Whole Country Caboodle



Two by Two

Visit Leanne:
www.thewholecountrycaboodle.com

Quilt designed by Sue Falkowski



7737-11



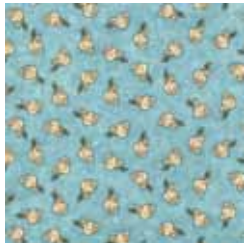
7738-66



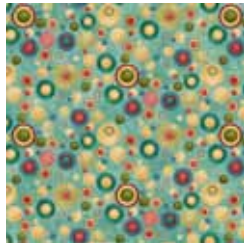
7739-66



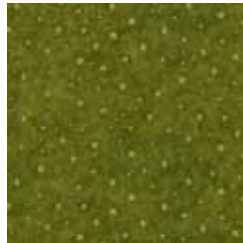
7739-77



7740-11



7741-11



7742-66



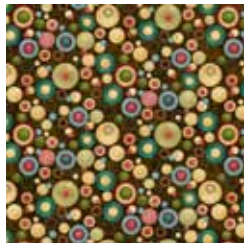
7743-44



7744-38



7740-33



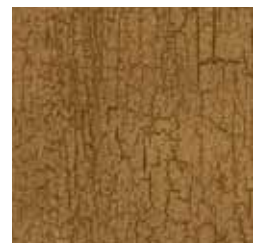
7741-38



7742-77



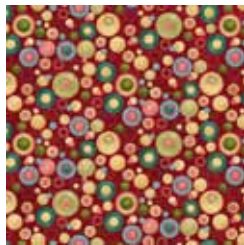
7743-77



7744-36



7740-88



7741-88



7742-88



7743-11



7744-33

Two by Two

By Leanne Anderson of the Whole Country Caboodle

LARGE QUILT 66 1/2" x 85"

7737-11 Noah & Ark Panel	One Panel
7741-38 Brown Bubbles	3/8 yd
7740-11 Aqua Doves	1/2 yd
7743-11 Aqua Swirls	1/2 yd
7743-44 Tan Swirls	1/2 yd
7744-33 Tan Texture	1/2 yd
7742-88 Red Stars	3/8 yd
7744-38 Dark Brown Texture	1-1/8 yd

(includes binding)

7739-77 Aqua Characters	1-3/8 yd
7738-66 Block Panel - One Panel (15 blocks)	
1/4 yd of <u>each</u> :	
7740-33/88	
7741-11/88	
7742-66/77	
7743-77	
7744-36	
7739-66 Green Characters (backing)	4 yards

CUTTING REQUIREMENTS

Strips are cut from the width of the fabric.

Noah & Ark Panel* 23 1/2" x 41 1/2"

**If your center panel measures less than 23 1/2" x 41 1/2", cut the Brown Bubble border strips wider to compensate. The panel with borders added measures 26 1/2" x 46" (unfinished size).*

Brown Bubbles 7741-38

- (2) 2" x 41 1/2" panel side borders
- (2) 2 3/4" x 26 1/2" panel top & bottom borders

From EACH: (5) 2 7/8" strips

- Aqua Doves 7740-11
- Aqua Swirl 7743-11
- Tan Swirl 7743-44
- Tan Texture 7744-33

Red Stars 7742-88

- (6) 2" strips, from these, create:
 - (2) 2" x 59" side borders
 - (2) 2" x 42 1/2" top & bottom borders

Dark Brown Texture 7744-38

- (7) 2" strips, from these, create:
 - (2) 2" x 73" side borders
 - (2) 2" x 56 1/2" top & bottom borders
- (8) 2 1/2" x wof strips pieced together end to end for binding

Aqua Characters 7739-77

- (8) 5 1/2" strips, from these, create:
 - (2) 5 1/2" x 76" side borders
 - (2) 5 1/2" x 66 1/2" top & bottom borders

Character Block Panel 7738-66
(15) 6" x 6" blocks

Assorted 1/4 yd. Fabrics

- (5) 6" squares (total)
- (14) 6" x 9" rectangles (total)

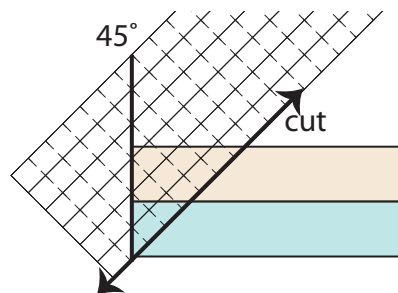
CONSTRUCTION

Seam allowance is 1/4". When adding the borders, press seams toward the borders.

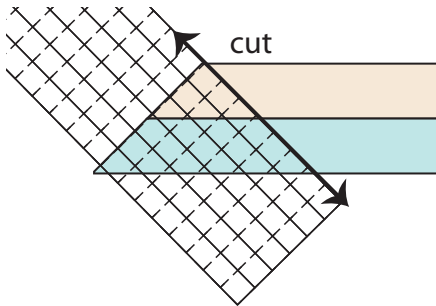
1. Begin with the center panel and cut to measure 23 1/2" x 41 1/2". (See note above if your panel measures less than this.)
2. Sew 2" x 41 1/2" Brown Bubbles border strips to each side of the center panel.
3. Sew 2 3/4" x 26 1/2" Brown Bubbles border strips to the top & bottom of the center panel. It will measure 26 1/2" x 46".

Blocks

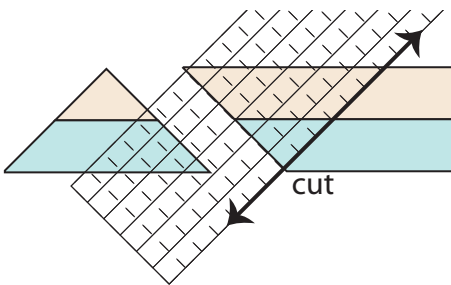
1. Sew 2 7/8" Aqua Swirl and Tan Swirl strips together lengthwise. Make 5 strip sets. Press seams to one side.
2. Align 45° line of your ruler along the end of the strip set and cut on the diagonal.



- Align the straight grid line of your ruler on the cut diagonal side of fabric.

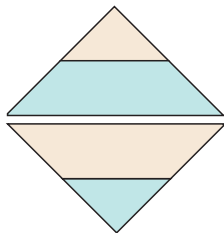


- Cut again as shown, creating a triangle.



Cut 26 triangles.

- Sew two triangles together to make a block. Press. The block measures 7" unfinished. Trim off the "ears".



Make 13 blocks

- Sew 2 $\frac{7}{8}$ " Aqua Doves and Tan Texture strips together lengthwise. Make 5 strips sets. Press seams to one side.
- Repeat Steps 2-5 to make an additional 13 blocks.
- There will be a total of 26 – 7" blocks.
- Using the picture of the quilt as a guide, noting orientation of the blocks and alternating color combinations, arrange 7 blocks for each side border and sew to the quilt.
- Arrange the top and bottom borders with 6 blocks each. Sew these to the quilt top.

Red Stars Border

Add 2" Red Stars border to the quilt, again sides first and then top and bottom.

Pieced Border with Panel Squares:

Using the picture of the quilt as a guide sew the following into border strips:

- The side borders each include (5) 6" squares (from panel & assorted fabrics) and (4) 6" x 9" assorted fabric rectangles.
- The top and bottom borders each include (5) 6" squares (from panel & assorted fabrics) and (3) 6" x 9" assorted fabric rectangles.
- Sew side strips to the quilt and then the top and bottom.



Dark Brown Texture Border

Add the 2" Dark Brown Texture border strips in the same manner.

Aqua Characters Border

Add the 5" Aqua Characters outer border in the same manner to complete the quilt top. Layer with batting and backing, quilt & bind with 2 $\frac{1}{2}$ " Dark Brown Texture binding.

SMALL QUILT 48 $\frac{1}{2}$ " x 69"

Fabric Requirements

7737-11 Noah & Ark Panel	One Panel
7739-77 Aqua Characters	1 yd
7740-11 Aqua Doves	1/2 yd
7741-38 Brown Bubbles	3/8 yd
7743-11 Aqua Swirls	1/2 yd
7743-44 Tan Swirls	1/2 yd
7744-33 Tan Texture	1/2 yd
7742-88 Red Stars (Binding)	1/2 yd
Backing	3 yards

Construction

Follow cutting & instructions from the large quilt, for center, bubble border & pieced border.

In addition, cut and sew to the quilt:

Aqua Characters 7739-77 border:

Cut: (6) 5" strips, from these create:

(2) 5" x 59" side borders

(2) 5" x 48 $\frac{1}{2}$ " top & bottom borders

Layer, quilt & bind with:

Red Stars 7742-88:

Cut: (7) 2 $\frac{1}{2}$ " strips for binding. Sew together end to end.