

Beyond the Gate

by Jill Finley



A Free Project Sheet From

 **Henry Glass & Co., Inc.**



Finished Quilt Size: 72" x 84"
49 West 37th Street, New York, NY 10018
tel: 212-686-5194 fax: 212-532-3525
Toll Free: 800-294-9495
www.henryglassfabrics.com

 facebook

Beyond The Gate

Finished Quilt Size: 72" x 84"
Finished Block Size: 8" x 8"

Fabrics in the Collection



5891-8
Cream Swirl



5891-11
Blue Swirl



5891-44
Yellow Swirl



5892-66
Green Floral



5892-88
Red Floral



5892-99
Black Swirl



5893-44
Yellow Check



5893-66
Green Check



5893-88
Red Check



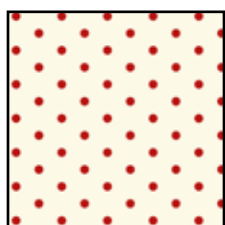
5894-11
Blue Keys



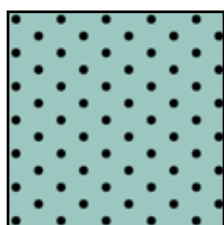
5894-44
Yellow Keys



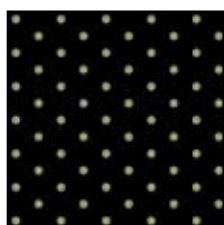
5894-66
Green Keys



5895-8
Cream Dot



5895-11
Blue Dot



5895-99
Black Dot



5896-11
Blue Loops



5896-66
Green Loops



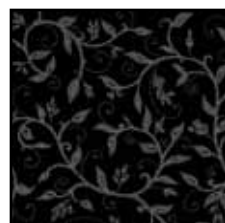
5896-88
Red Loops



5952-03t
Cream Vines



5952-90
Gray Vines



5952-99
Black Vines

Fabric Requirements

2½ yards	Cream Vines	5952-03t
1½ yards	Black Floral	5892-99
1 yard	Cream Swirl	5891-8
½ yard	Black Vines	5952-99
¼ yard	Black Dot	5895-99
¼ yard	Yellow Swirl	5891-44
¼ yard	Green Floral	5892-66
¼ yard	Red Floral	5892-88
¼ yard	Yellow Check	5893-44
¼ yard	Green Check	5893-66
¼ yard	Red Check	5893-88
¼ yard	Blue Keys	5894-11
¼ yard	Yellow Keys	5894-44
¼ yard	Green Keys	5894-66
¼ yard	Blue Dot	5895-11
¼ yard	Green Loops	5896-66
¼ yard	Red Loops	5896-88
¼ yard	Gray Vines	5952-90
⅝ yard	Black Vines	5952-99
	(for binding)	
5 yards	Cream Dot	5895-8
	(for quilt backing)	

Cutting Instructions

Please note: all strips are cut across the width of the fabric from selvage edge to selvage edge.

From cream vines, cut:

- (10) strips, 4½" x 42", crosscut 4 strips into:
 - (16) rectangles, 4 ½" x 8½"
- (6) strips, 2½" x 42"
- (7) strips, 3½" x 42", crosscut into:
 - (40) rectangles, 3½" x 6½"

From black floral, cut:

- (7) strips, 6½" x 42"

From green swirl, cut:

- (6) strips, 4½" x 42"

From ½ yard of black vines, cut:

- (13) strips, 1" x 42"

From black dot, cut :

- (1) strip, 3½" x 42", crosscut into:
 - (10) squares, 3½" x 3½"

From EACH of:

yellow swirl, green floral, red floral, yellow check, green check, red check, blue keys, yellow keys, green keys, blue dot, green loops, red loops, and gray vines, cut a total of:

- (10) squares, 4½" x 4½";
- (76) rectangles, 2½" x 4½";
- (40) rectangles, 1¼" x 5¼";
- (40) rectangles, 2¼" x 7¾"; and
- (20) of yo yo pattern A. (3" circle)

From the ⅝ yard of black vines, cut:

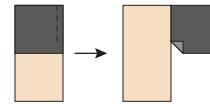
- (7) strips, 2¼" wide for binding

Sewing Instructions

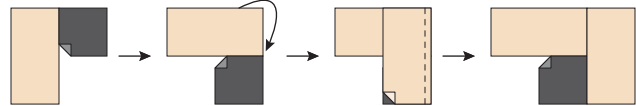
All seams are sewn using ¼" seam allowance with pieces held right sides together and raw edges even.

Block Unit #1

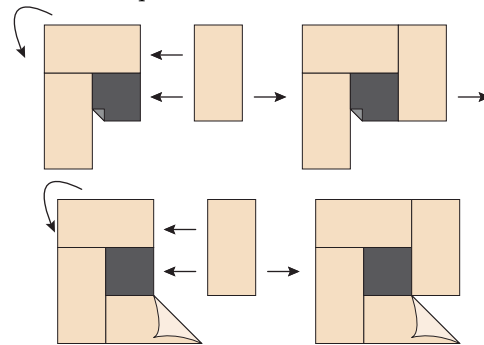
1. Lay a 3½" black dot square right sides together on a 3½" x 6½" cream rectangle matching the long edge of the cream with one side of the square having the top edges even. (The cream rectangle will be longer than the black square.) Sew the pieces together in a ¼" seam halfway down the black square.



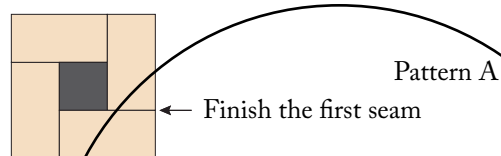
2. Finger press the partial seam toward the black square. Now rotate the black square ¼ turn clockwise and add another 3½" x 6½" cream rectangle on this side, sewing all the way along the long side of the cream rectangle. Press toward the black square.



3. Rotate the black square ¼ turn counter-clockwise and add a third 3½" x 6½" cream rectangle in the same manner as step 2 above. Repeat for the 4th side of the black square.

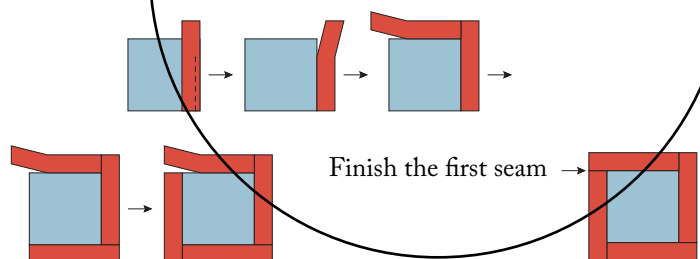


4. Now finish sewing the partial seam on the first side of the black square. Press. Repeat to make 10 of Block #1.

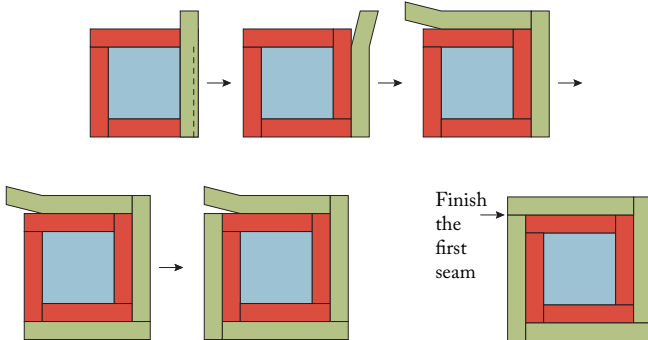


Block Unit #2

1. Using the partial seam method as used in Block Unit #1, sew 4 matching 1¼" x 5¼" rectangles around a center 4½" square of contrasting color.

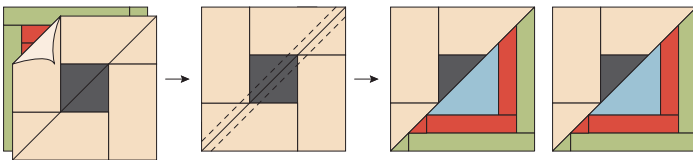


2. Using the partial seam method again, sew 4 matching $2\frac{1}{4}$ " x $7\frac{3}{4}$ " rectangles of a contrasting color around the started Block Unit #2 center. Mix the colors in each block to make the blocks scrappy. Make 10 of Block Unit #2.



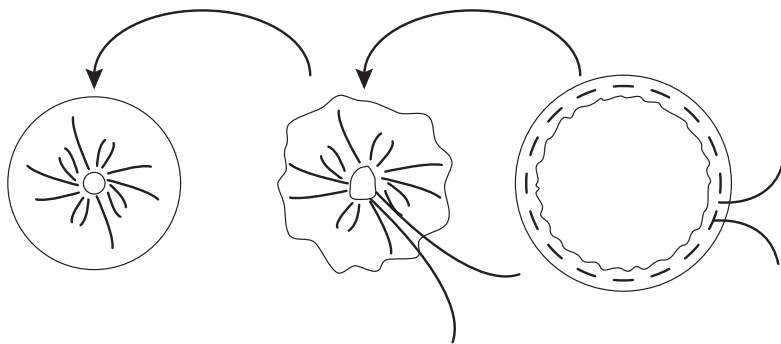
Finishing Blocks

Place a Block Unit #1 and a Block Unit #2 right sides together. Draw a diagonal line from corner to corner on the back of the block. Sew $\frac{1}{4}$ " away from both sides of the drawn line. Cut apart on the drawn line making two separate identical blocks. Press. Trim the blocks to $8\frac{1}{2}$ " square, making sure to center the block. Make 20 finished Blocks.



Make the yo-yos

Using the circles you have cut, fold in the raw edge around the circle about $\frac{1}{4}$ " as you hand stitch around in a short basting stitch with strong thread. Draw up the threads tightly to close the circle. Tie off. Push the center (gathered edge) of the yo-yo down and pull the sides out to create a nice flat, symmetrical yo-yo. Use your needle to carry the thread ends to the back of the yo-yo and tie off again.



Place one yo-yo on each finished Block as shown in picture and appliqué in place by hand or machine.

Quilt Assembly

1. Using the quilt picture as a guide, lay out the blocks in a pleasing arrangement of 4 columns with 5 blocks in each column. Sew a $4\frac{1}{2}$ " x $8\frac{1}{2}$ " background rectangle between each block.
2. Use the $4\frac{1}{2}$ " x 42" cream background strips to make three sashing strips, $4\frac{1}{2}$ " x $58\frac{1}{2}$ ". Sew these strips between the columns.
3. Use the $2\frac{1}{2}$ " x 42" cream background strips to make two borders $2\frac{1}{2}$ " x 56" and two borders $2\frac{1}{2}$ " x $48\frac{1}{2}$ ". Sew the $56\frac{1}{2}$ " long borders to the sides of the quilt center. Sew the $48\frac{1}{2}$ " long borders to the top and bottom of the quilt center.
4. Use the 1" wide black background strips to make flat piping: Cut the selvages off the short ends and sew together end to end. Fold the strip in half, wrong sides together and press to create a folded strip $\frac{1}{2}$ " wide. Cut into: 2 pieces $60\frac{1}{2}$ " long, 2 pieces $48\frac{1}{2}$ " long, 2 pieces $56\frac{1}{2}$ " long, and 2 pieces $68\frac{1}{2}$ " long. Baste the $60\frac{1}{2}$ " piping pieces to the sides of the quilt matching raw edges. Baste the $48\frac{1}{2}$ " piping pieces to the top and bottom of the quilt center with raw edges even. Do not press open.
5. Use the $4\frac{1}{2}$ " x 42" blue scroll print strips to make 2 borders $56\frac{1}{2}$ " long and two borders $60\frac{1}{2}$ " long. Sew the longer borders to the sides of the quilt center. The black piping will be sandwiched between the quilt center and the blue scroll border. In the same manner, sew the shorter blue scroll borders to the top and bottom of the quilt.
6. Now baste on the remaining black piping pieces as you did before, with the $68\frac{1}{2}$ " long pieces on the sides of the quilt and the $56\frac{1}{2}$ " long pieces on the top and bottom of the quilt.
7. Use the $6\frac{1}{2}$ " x 42" green floral strips to make 4 borders $68\frac{1}{2}$ " long. Sew a border to each side of the quilt, and a border to the top and bottom of the quilt.
8. Place $2\frac{1}{2}$ " x $4\frac{1}{2}$ " rectangles end to end in a pleasing arrangement mixing all the colors to make the scrappy final border. Use 20 rectangles for each side of the quilt and 18 rectangles for the top and bottom of the quilt. Sew the rectangles together, and then to the quilt sides and top and bottom.
9. Layer the completed quilt top with batting and backing and quilt as desired. Trim the finished quilt and bind using the $2\frac{1}{4}$ " black vines binding strips.